



ALABAMA DEPARTMENT OF TRANSPORTATION BICYCLE AND PEDESTRIAN PLAN

 GOODWYN | MILLS | CAWOOD

ALABAMA DEPARTMENT OF TRANSPORTATION BICYCLE AND PEDESTRIAN PLAN



2010



 GOODWYN | MILLS | CAWOOD



- I. Goals*
- II. Objectives*
- III. Statewide Bicycle Route System*
- IV. Bicycle Facility Planning and Design*
- V. Pedestrian Facility Planning and Design*
- VI. Funding*



Goals

- Improve practices to minimize barriers for local and regional Bicycle-Pedestrian planning.
- Improve Bicycle-Pedestrian Planning in ALDOT roadways.
- Minimize impacts of ALDOT projects on non-motorized transportation.



Objectives

- Integrate existing bicycle facilities with a larger statewide network.
- Establish facilities between municipalities
- Establish bicycle and pedestrian facilities to complement local and regional non-motorized transportation plans



Role of the Plan

- Develop a statewide network of on-road bicycle facilities
- A set of design recommendations for bicycle and pedestrian facilities



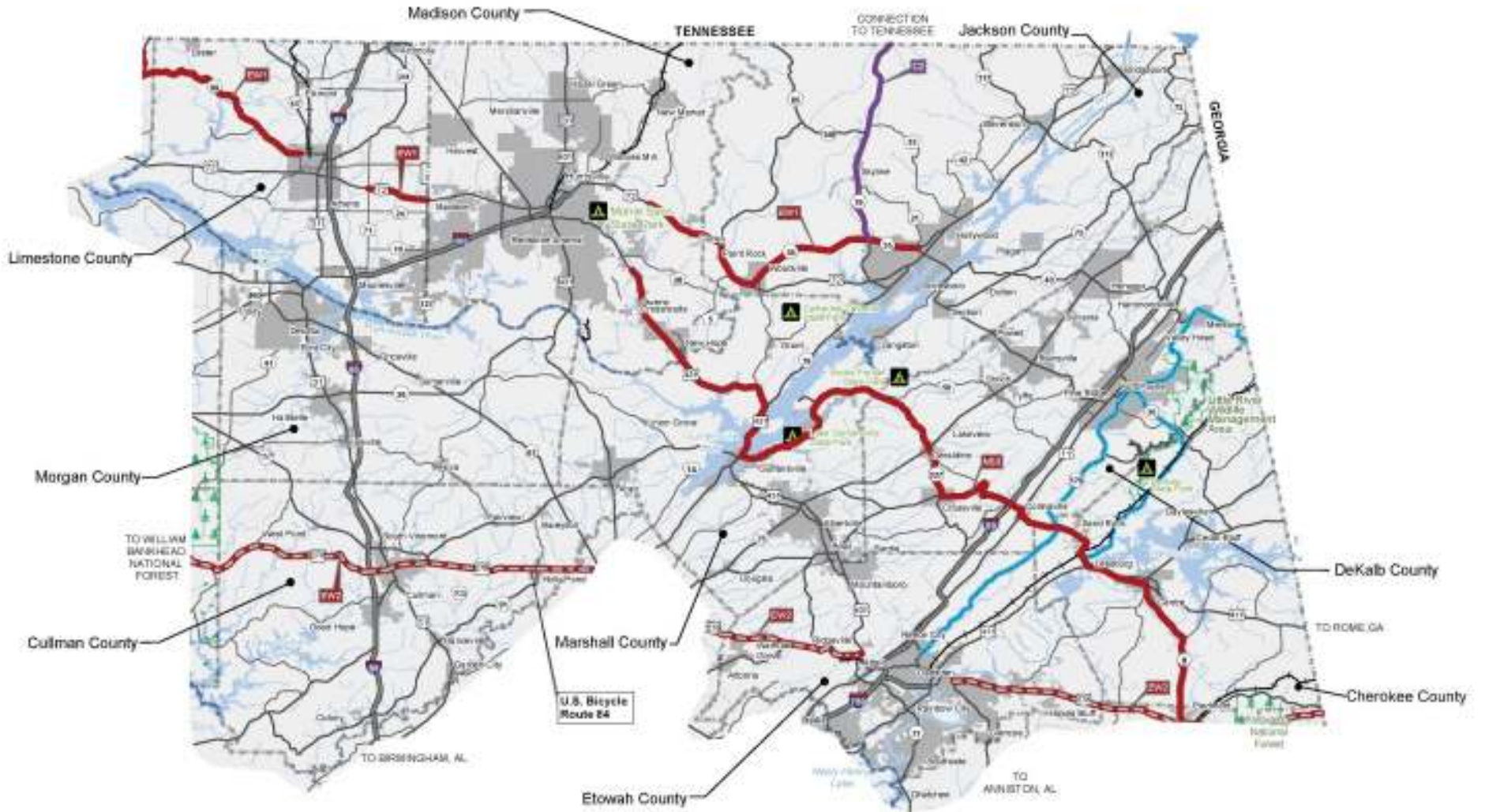
Statewide Bicycle Routes



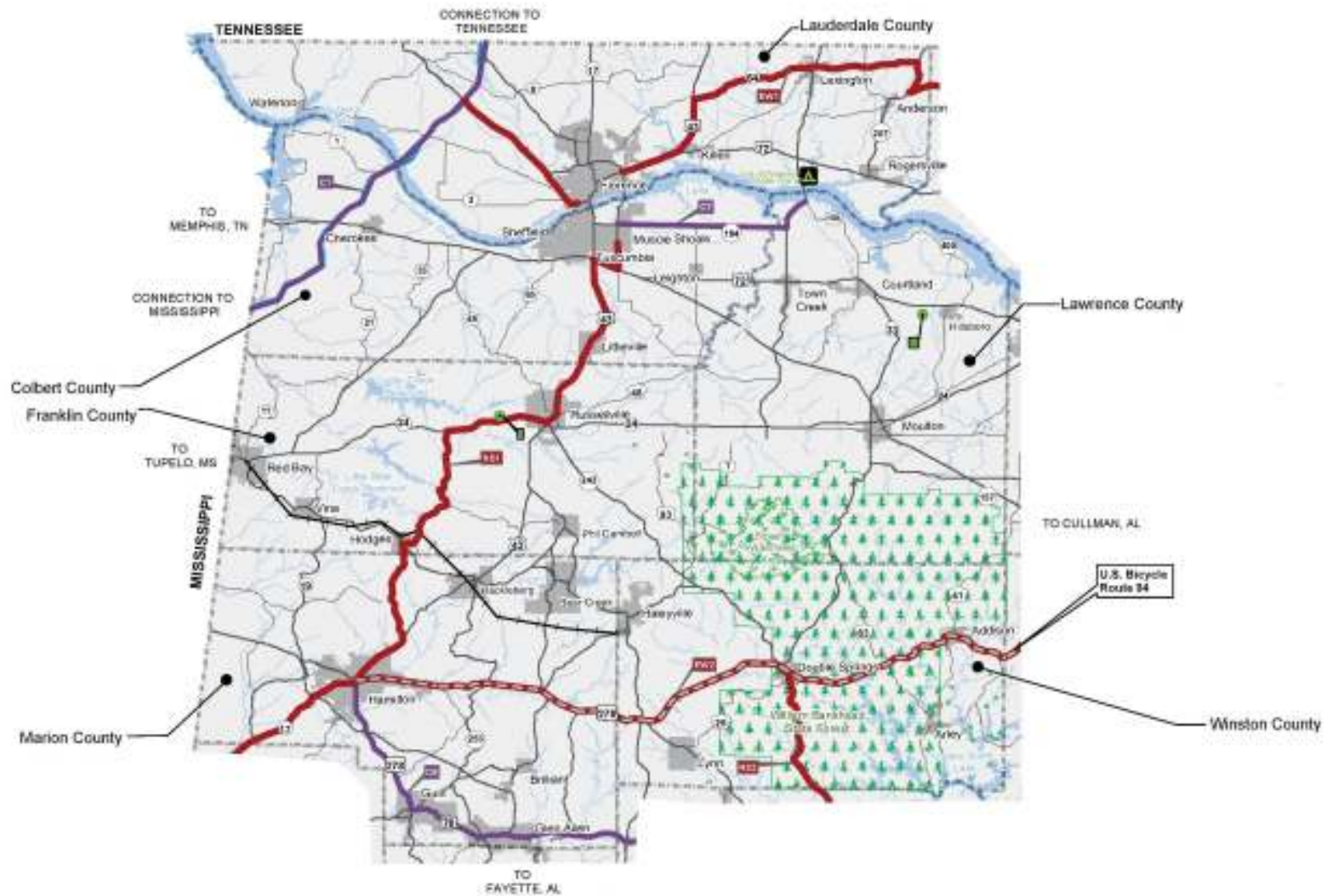
North/South Bicycle Routes



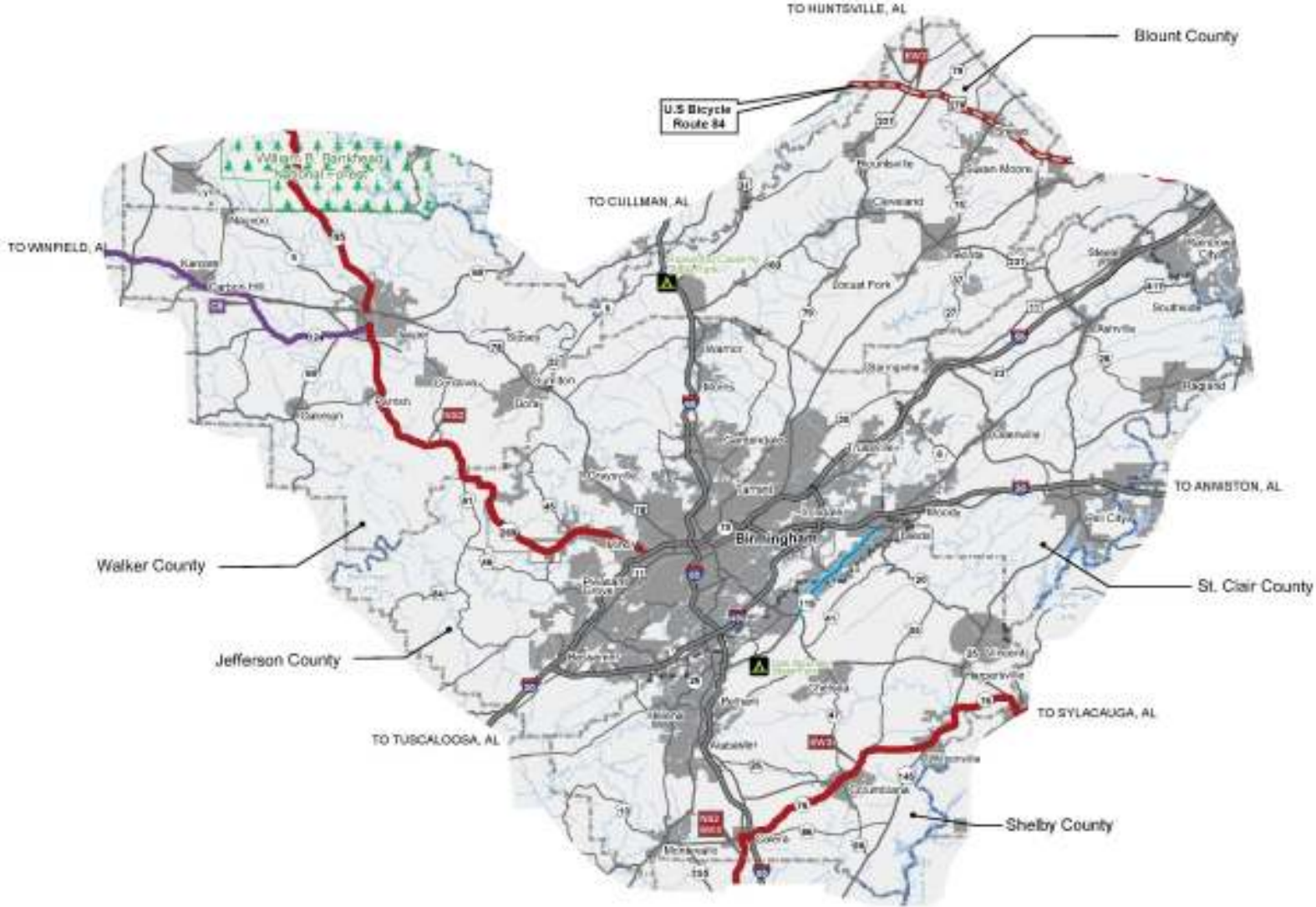
First Division



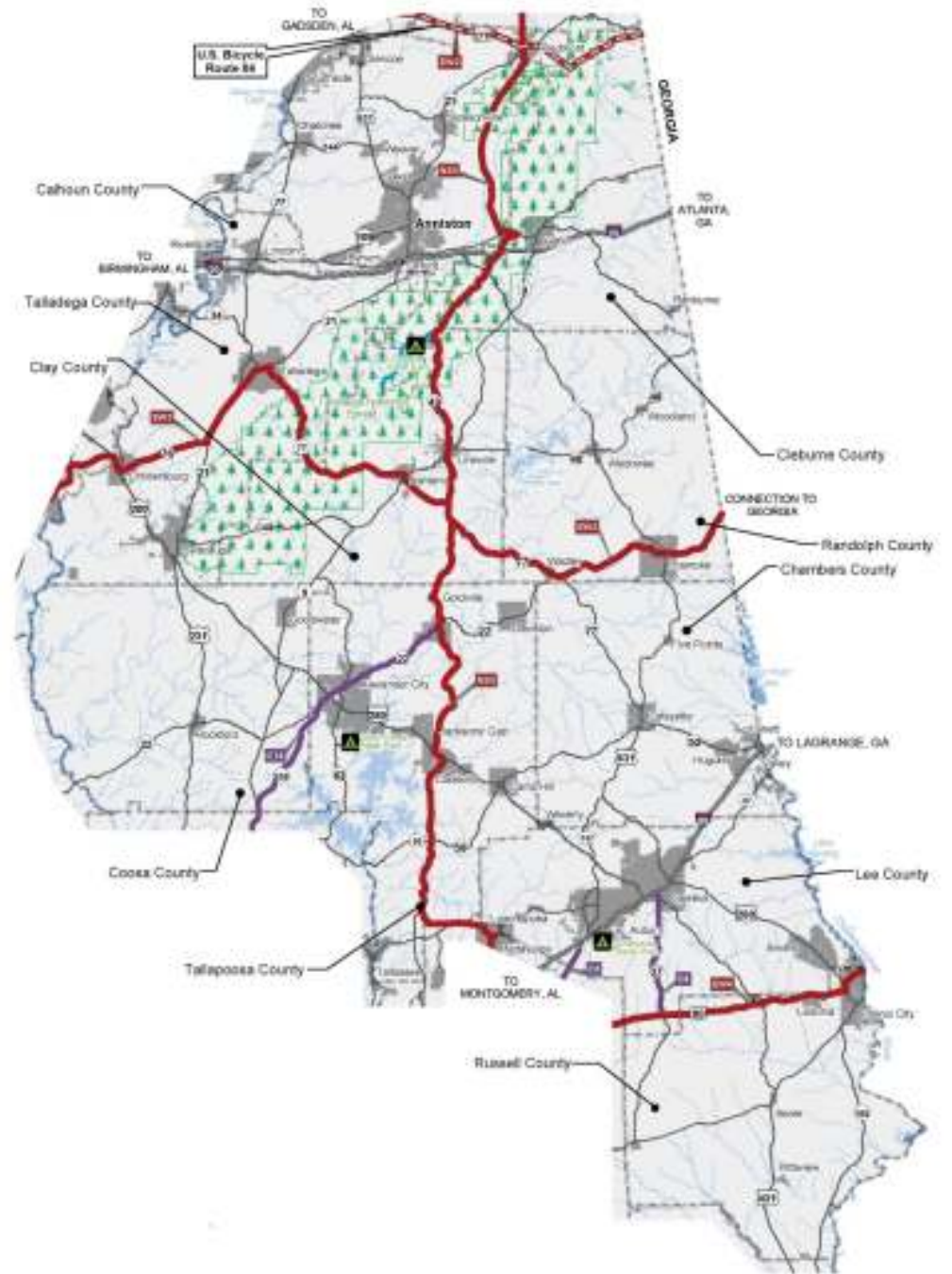
Second Division



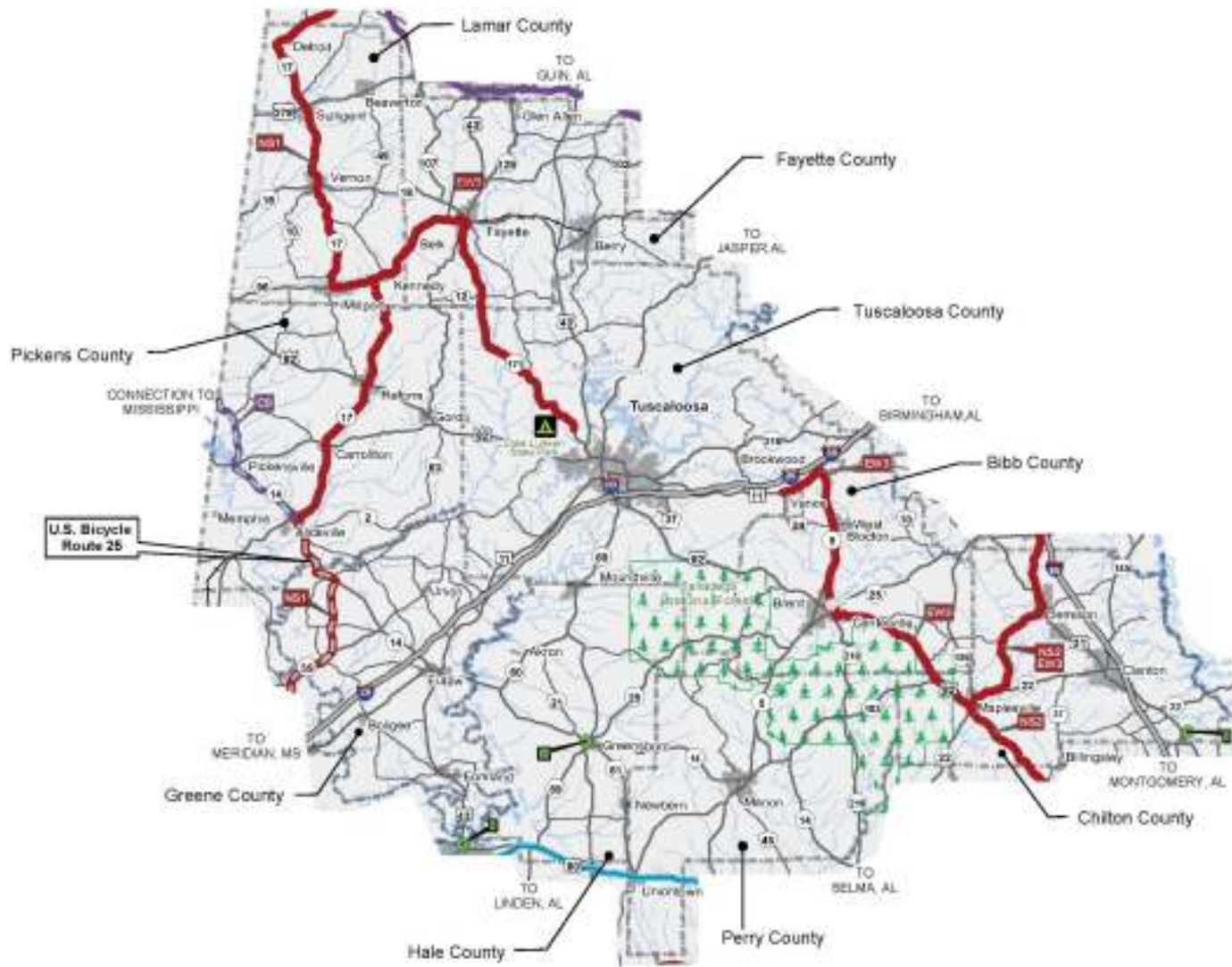
Third Division



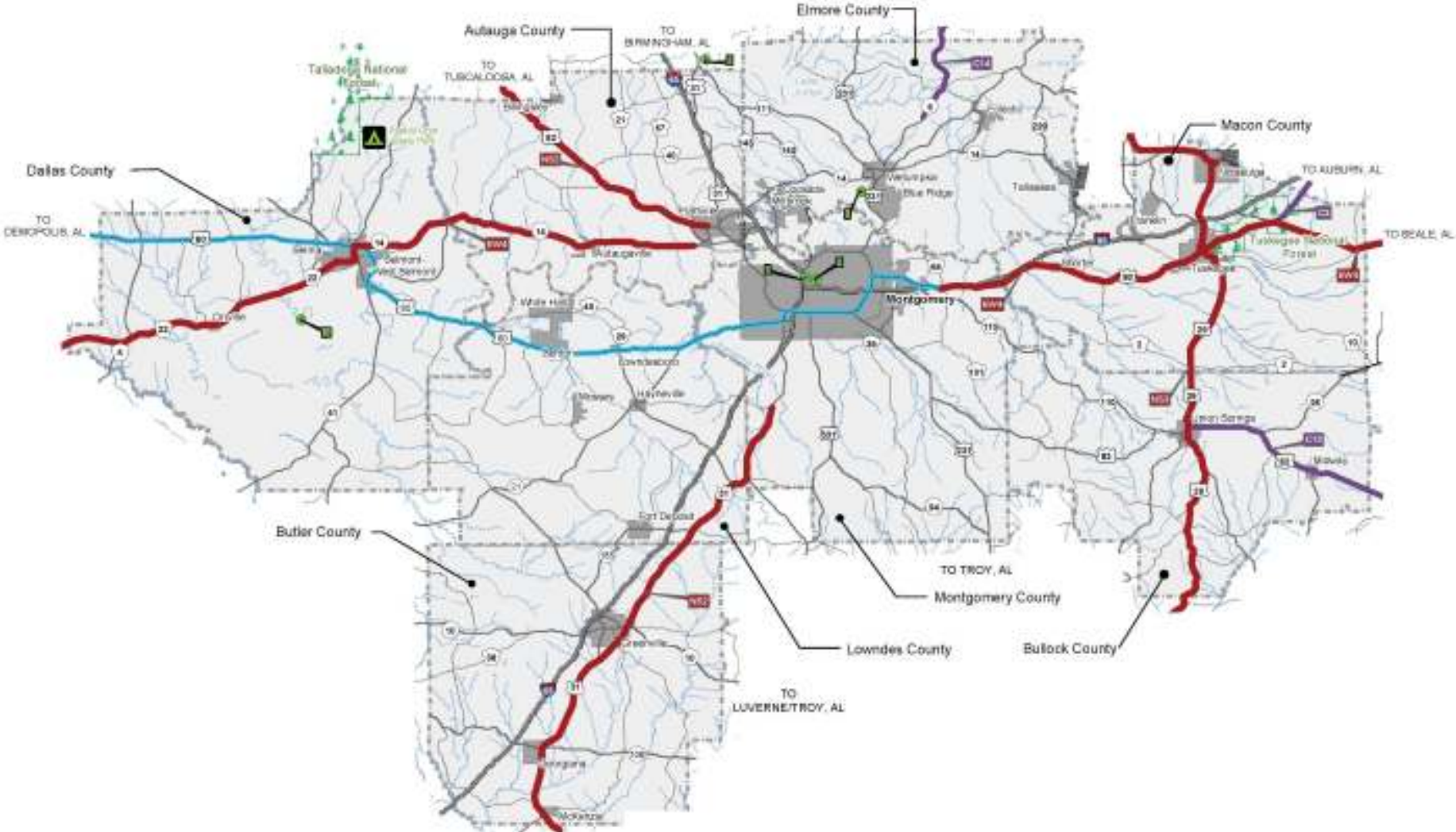
Fourth Division



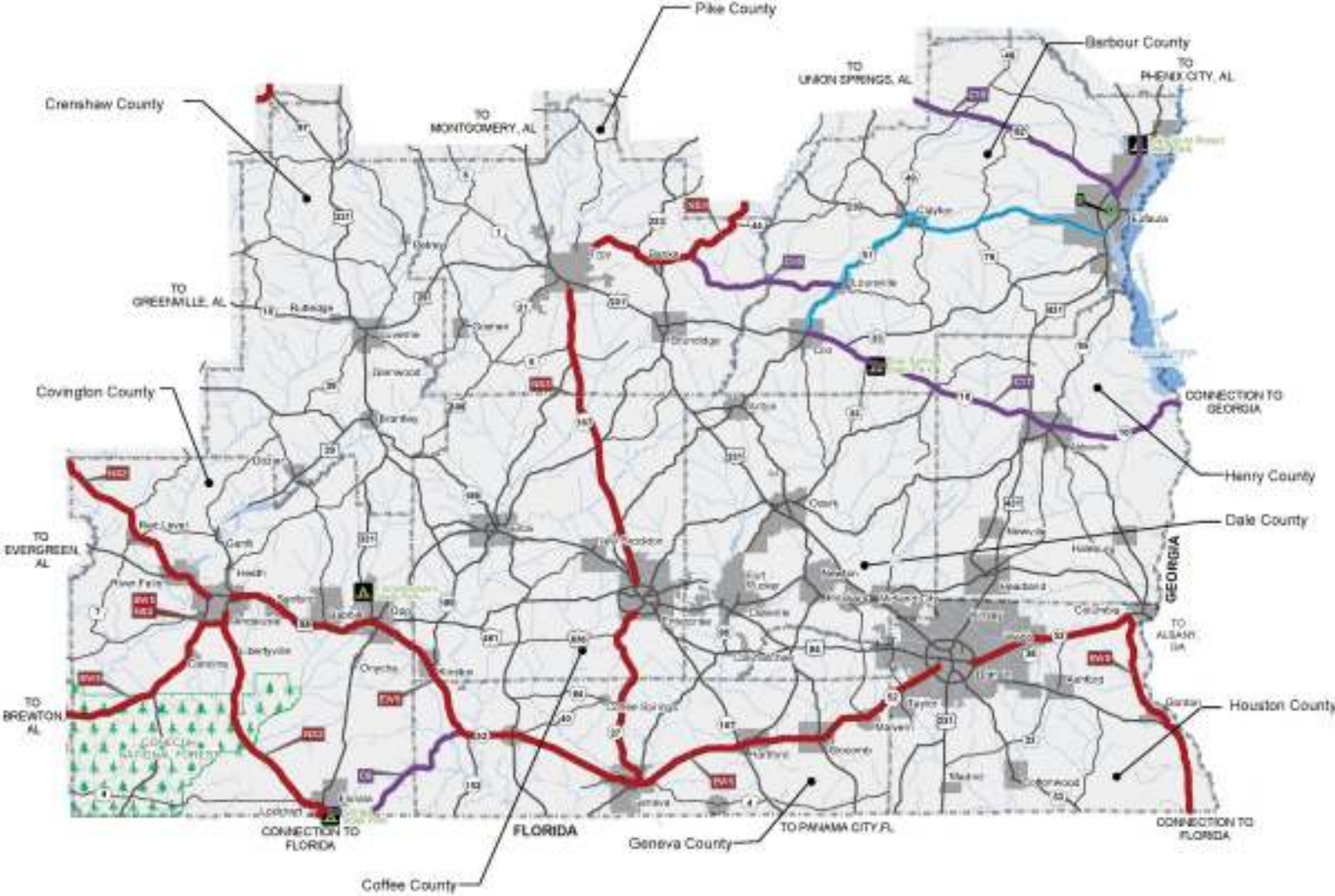
Fifth Division



Sixth Division



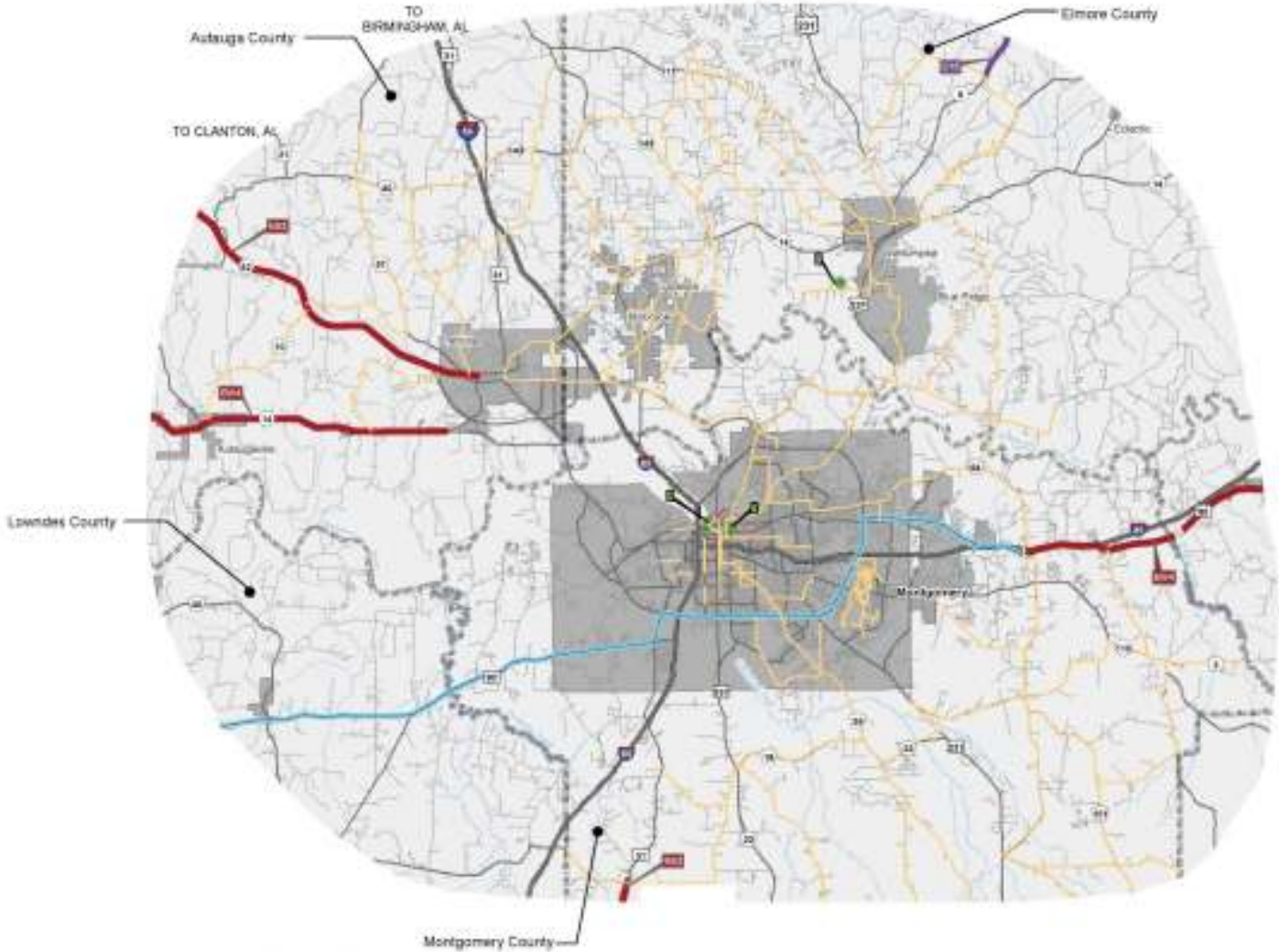
Seventh Division



Eighth Division



Sixth Division Montgomery



Bicycle Pedestrian Facility Planning: Factors to Consider

- The highway or street is designated as a bikeway in a regionally or locally adopted bike plan or is published in a nationally, regionally or locally adopted map as a recommended bike route.
- The highway project will negatively affect the recreational or transportation utility of an independent bikeway.
- The route or intersection provides primary access to (a) employment centers; (b) commercial facilities (c) transit stations/stops; (d) schools; or (e) parks or stadiums.



Bicycle Pedestrian Facility Planning: Factors to Consider

- The roadway provides unique access across a natural or man-made barrier.
- A locally or regionally adopted pedestrian plan has designated pedestrian improvements in the area of the specific roadway project.
- There is current evidence of frequent pedestrian activity.
- There is a history of pedestrian-related crashes.
- The roadway improvement will create a safety impediment to existing or anticipated pedestrian travel.



Bicycle Facility Design



Shared Lane



Wide Outside Traffic Lane



Bike Lane



Paved Shoulder



Pedestrian Facility Design

- Sidewalks - width; pavement selection; obstacles such as manhole covers, utility poles, vegetation,
- and standing water; running slope; cross-slope; and treatment at intersecting driveways
- Curb Ramps - type (parallel, perpendicular, diagonal, combination); orientation; running slope; cross slope; width; and landing area
- Detectable Warnings - location; width; color; and dome alignment





Pedestrian Facility Design

- Channelizing Islands - cut-throughs versus curb ramps; location related to feeding curb ramps; and utility and signal pole locations
- Pedestrian Push-Buttons - type; size; contrast; orientation to direction of travel; location relative to curb ramps; location on channelizing islands; and locator tone
- Audible Signals - location; and tone/message selection
- Crosswalks - width; pavement selection (pavers, stamped); and obstacles (utilities, grates)



Bicycle/Pedestrian Funding Opportunities

	NHS	STP	HSIP	SRTS	TEA	CMAQ	RTP	FTA	TE	BRI	402	PLA	TCSP	JOBS	FLH	BYW
Bicycle and pedestrian plan		X				X						X	X			
Bicycle lanes on roadway	X	X	X	X	X	X		X	X	X					X	X
Paved Shoulders	X	X	X	X	X	X				X					X	X
Signed bike route	X	X		X	X	X									X	X
Shared use path/trail	X	X		X	X	X	X			X					X	X
Single track hike/bike trail							X									
Spot improvement program		X	X	X	X	X										
Maps		X		X		X					X					
Bike racks on buses		X			X	X		X	X							
Bicycle parking facilities		X		X	X	X		X	X							X
Trail/highway intersection	X	X	X	X	X	X	X								X	X
Bicycle storage/service center		X		X	X	X		X	X				X	X		
Sidewalks, new or retrofit	X	X	X	X	X	X		X	X	X					X	X
Crosswalks, new or retrofit	X	X	X	X	X	X		X	X						X	X
Signal improvements	X	X	X	X	X	X										
Curb cuts and ramps	X	X	X	X	X	X										
Traffic calming		X	X	X									X			
Coordinator position		X		X		X							X			
Safety/education position		X		X		X					X					
Police Patrol		X		X							X					
Helmet Promotion		X		X	X						X					
Safety brochure/book		X		X	X	X	X				X					
Training		X		X	X	X	X				X					

Key

NHS – National Highway System

STP – Surface Transportation Program

HSIP – Highway Safety Improvement Program

SRTS – Safe Routes to School Program

TEA – Transportation Enhancement Activities

CMAQ – Congestion Mitigation/Air Quality Program

FLH – Federal Lands Highway Program

BYW – Scenic Byways

BRI – Bridge

402 – State and Community Traffic Safety Program

PLA – State/Metropolitan Planning Funds

TCSP – Transportation and Community and System Preservation Pilot Program

JOBS – Access to Jobs/Reverse Commute Program

RTP – Recreational Trails Program

FTA – Federal Transit Capital, Urban & Rural Funds

TE – Transit Enhancements



